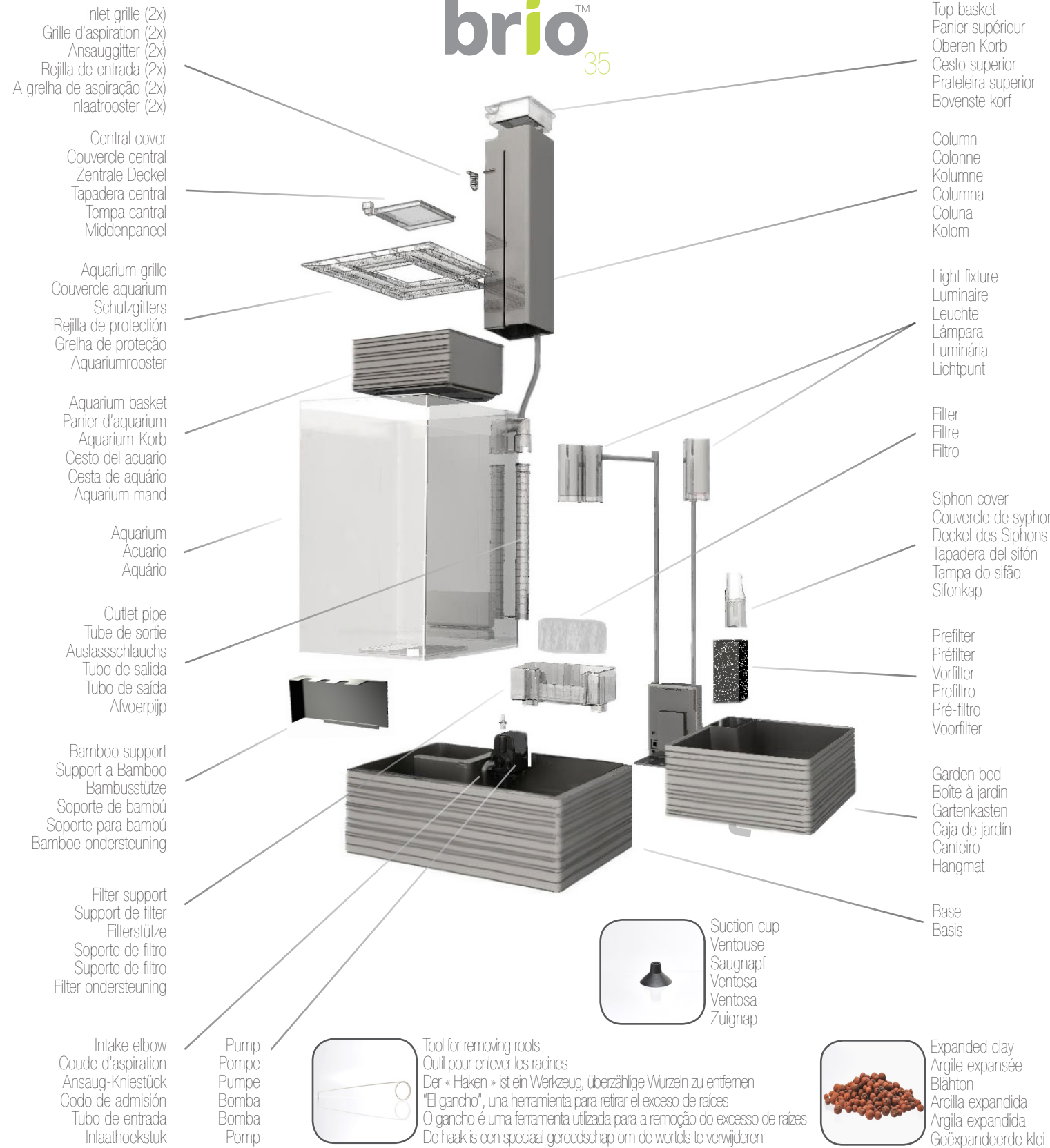


brioTM
35



urban eco garden



Cabinet sold separately
Cabinet vendus séparément
Schränkchen, separat verkauft
Mesa vendido por separado
Gabinete, vendido separadamente
Kast, apart verkrijgbaar

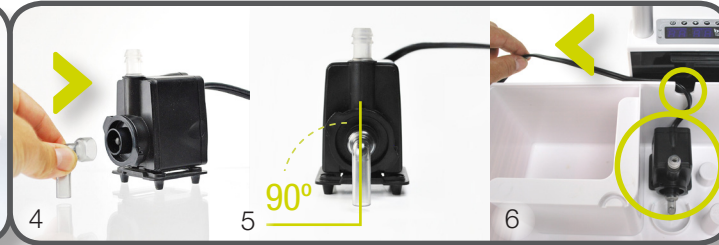
brioTM
35

COMPONENTS LIST • LISTE DES PIÈCES • ERSATZTEILLISTE
LISTA DE PIEZAS • LISTA DE PEÇAS • ONDERDELENLIJST

USER GUIDE • GUIDE DE L'UTILISATEUR • BENUTZERHANDBUCH
GUÍA DEL USUARIO • GUIA DE USUÁRIO • GEBRUIKERSHANDLEIDING



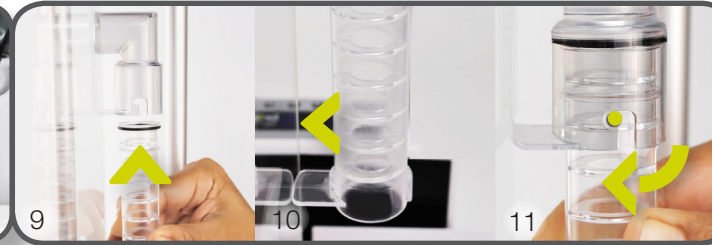
- Main assembly
- Assemblage principal
- Hauptmontage
- Montaje principal
- Montagem principal
- Hoofd assemblage



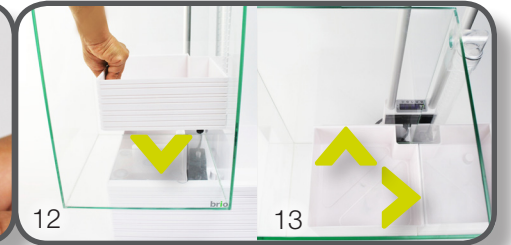
- Pump assembly
- Assemblage de la pompe
- Pumpengruppe
- Montaje de la bomba
- Montagem da bomba
- Montage van de pomp



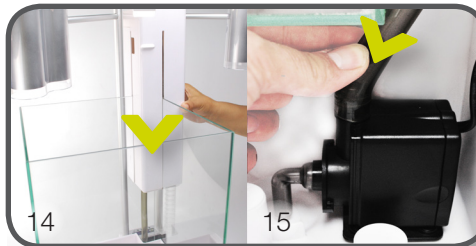
- Aquarium assembly
- Assemblage de l'aquarium
- Aquarium Versammlung
- Montagem Aquarium
- Montaje del acuario
- Montage van de aquarium



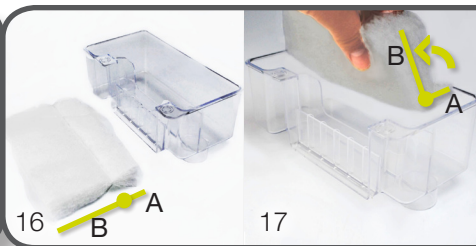
- Outlet pipe assembly
- Assemblage de tube de sortie
- Zusammenbauen des Auslassschlauchs
- Montaje del tubo de salida
- Montagem tubo de saída
- Montage van de afvoerpijp



- Aquarium basket assembly
- Assemblage du panier d'aquarium
- Zusammenbauen des Aquarium-Korb
- Montaje del cesto del acuario
- Montagem da cesta de aquário
- Montage van de aquarium mand



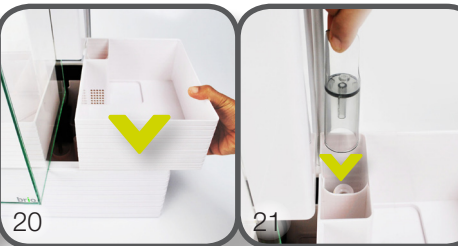
- Column assembly
- Assemblage de la colonne
- Zusammenbauen des Säule
- Montaje de la columna
- Montagem da coluna
- Montage van de kolom



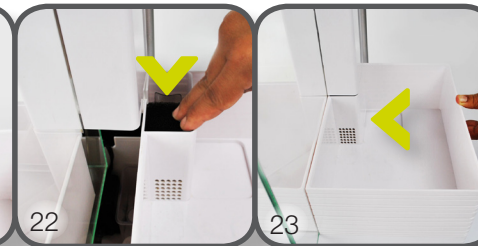
- Filter assembly
- Assemblage du filtre
- Zusammenbauen des filter
- Montaje del filtro
- Montagem do filtro
- Montage de filter



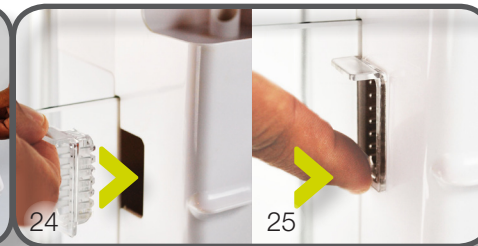
- Garden bed assembly
- Assemblage - boîte à jardin
- Zusammenbauen des Gartenkasten
- Montaje de la caja de jardín.
- Montagem do canteiro
- Montage van de tuinbed



- Siphon assembly
- Assemblage du siphon
- Zusammenbauen des siphons
- Conjunto principal
- Montagem do sifão
- Montage van de sifon



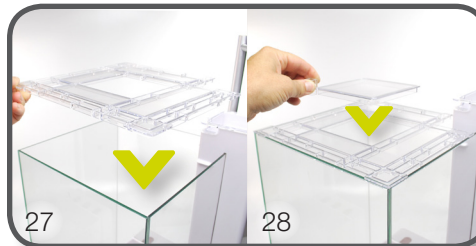
- Prefilter assembly
- Assemblage du pre-filtre
- Zusammenbauen des Vorfilters
- Montaje del pre-filtro
- Montagem do pré-filtro
- Montage van do voorfilter



- Inlet grille assembly
- Assemblage de la Grille d'aspiration
- Zusammenbauen des Ansauggitter
- Montaje de la rejilla de entrada
- A montagem a grelha de aspiração
- Montage van de inlaat grill



- Top basket assembly
- Assemblage du panier supérieur
- Zusammenbauen des oberen Korb
- Montaje del cesto superior
- Montagem prateleira superior
- Montage van de bovenste korf



- Aquarium grille
- Grille de protection
- Schutzgitter
- Rejilla de protección
- Grelha de proteção
- Aquariumrooster



- Center cover
- Couvercle central
- Zentralen Deckel
- Tapadera central
- Tempa cantral
- Centrumdeksel



- Bamboo support assembly
- Assemblage du support pour bambou
- Bambusstütze
- Montaje de soporte de bambú
- Montagem a suporte para bambu
- Montage van de bamboe ondersteuning



- Expanded clay
- Substrat d'argile
- Blähton
- La argila expandida
- Argila expandida
- Geëxpandeerde klei



- Aquarium substrate
- Substrat d'aquarium
- Substrat für das aquarium
- Substrato para acuario
- Substrato do Aquário
- Aquarium substraat



- Water refill
- Recharge d'eau
- Wasserauffüllung
- Llenado de agua
- Enchimentos de água
- Water bijvullen



- Bamboo garden
- Jardin de bambou
- Bambusgarten
- Jardín de bambú
- Jardim de bambu
- Bamboe tuin

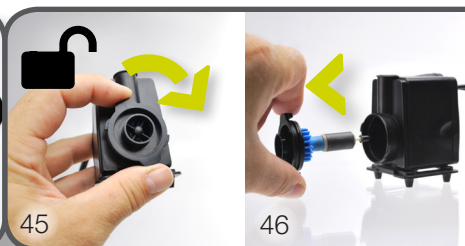
- Transplantation
- Transplantation
- Verpflanzen
- Trasplante
- Transplantação
- Transplantatie



- Timer
- Minuterie
- Zeitschalter
- Temporizador
- Temporizador
- Timer



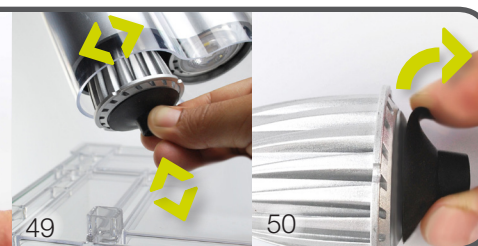
- Maintenance of roots
- Entretien des racines
- Wartung von Wurzeln
- Mantenimiento de raíces
- Manutenção de raízes
- Onderhoud van Wortels



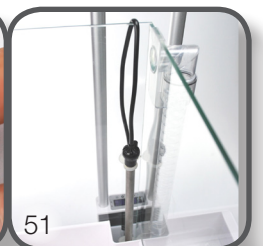
- Outlet pipe maintenance
- Entretien du tube de sortie
- Wartung von Auslassschlauchs
- Mantenimiento del tubo de salida
- Manutenção tubo de saída
- Onderhoud van de afvoerpijp



- Pump maintenance
- Entretien de la pompe
- Pumpe Wartung
- El mantenimiento de la bomba
- Manutenção da bomba
- Onderhoud van de pompe



- Light bulb replacement
- Remplacement d'ampoule
- Austausch der GLÜHBIRNEN
- Substituição de lâmpadas
- Substituição das lâmpadas
- Lampen vervanging



- Brio35 Water heater
- Brio35 Chauffe-eau
- Wasserwärmer von Brio 35
- Brio35 Calentador de agua
- Aquecedor de água Brio35
- Brio35 verwarming

Congratulations!

We are pleased you have decided to explore the hobby of aquaponics with the Brio35 to benefit from an experience that only the Brio urban eco garden can provide.

Eco friendly, this new family of home aquariums based on natural ecosystems, brings the science of aquaponics in your living room in a truly elegant design.

Please read and follow these instructions for proper installation, maintenance and use. Failure to do so may result in loss of fish life and or damages to the appliance.

IMPORTANT SAFETY INSTRUCTIONS

WARNING: To guard against injuries, basic precautions must be observed including the following:

1. READ AND FOLLOW ALL SAFETY INSTRUCTIONS

Including all the important notices on the appliance before assembling and using. Failure to do so may result in injuries, loss of fish life and /or damage to this appliance.

2. DANGER: To avoid possible electric shock, special attention must be taken as water is employed in the use of an aquaponics system. For each of the following situations, do not attempt to repair yourself; return the appliance to an authorized service facility or discard the appliance, if so, verify with an environmental agency to recycle this product.

This instruction manual has been carefully prepared to provide you with accurate and complete information. All efforts have been made to ensure that the information given is correct. However, we cannot accept responsibility for printing errors or other. Technical

details are always approximate, are not warranted characteristics and may be subject to change without notice.

A. Do not operate this appliance if it has damage on the power cords or plugs or if it is malfunctioning or has been dropped or damaged in any manner.

B. Do not add water, but only once the device is completely installed and ready to operate. Do not connect the device before the drip loops and installation following these instructions are completed.

C. To prevent water from traveling along the cord and coming in contact with the electrical outlet or power supply, a drip loop must be arranged by the user for each cord connecting the appliance to the electrical outlet as shown in figure 1. The drip loop is the part of the cord below the level of the receptacle, or the connector if there is the use of an extension.

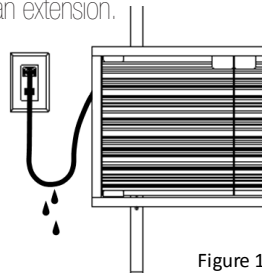


Figure 1

D. If the use of an extension cord is necessary, an extension cable with the proper electrical rating should be used. An extension cable rated for less amperage or wattage than the appliance rating may over heat.

The proper length of extension cord should be used. Care should be taken to arrange the cable so that it will not be tripped over or pulled.

E. After installation, examine carefully the appliance, if the cord, plug or outlet gets wet, or if there is abnormal water leakage on the appliance and its accessories are humid while they should be dry, DO NOT plug the appliance. If the appliance is already plugged in, DO NOT unplug the cord, disconnect

the fuse or circuit breaker that supplies the power to the appliance then unplug and examine for the presence of water in the socket.

F. If the appliance or any parts of it falls in the water, DO NOT reach for it, first unplug the unit before retrieving.

G. At all times, keep this appliance out of reach from children.

H. This appliance can be used by children aged from 8 years and above and persons with reduced physical, sensory or mental capabilities or lack of experience and knowledge if they have been given supervision or instruction concerning the use of the appliance in a safe way and understand the hazards involved. Children shall not play with the appliance. Cleaning and user maintenance shall not be made by children without supervision.

I. Light bulbs or heater can cause burning injuries, DO NOT touch these devices when plugged in or hot. Never touch moving parts as they can cause injuries.

J. Always unplug the appliance from the outlet when not in use and before cleaning, removing or adding parts.

K. Manipulate with extra care, never strike the appliance or its parts. Never yank the cord to pull from the outlet, grasp the plug and pull to disconnect.

L. Never add to this appliance components non-recommended and not sold by the manufacturer, this could result in damaging the appliance and cause possible injuries to the user.

M. Never use this appliance for other purpose than intended.

N. Never move or transport the appliance once it is filled with water and installed.

O. The water temperature must be never exceed 30°C and never less

than 20°C. Never expose, install or store the appliance where it will be exposed to weather or temperatures below freezing.

P. Install the appliance in a secure area, with surveillance, away from high traffic, on a dry, clean, solid, level surface and far from a heat source, electrical equipment and strong air circulation.

Q. To avoid any damage or overheating, make sure all ventilation orifices on the light fixtures are not blocked or restricted.

R. At all time, all water circulation intakes must not be restricted or blocked (inlet grilles, siphon, piping)

S. Never activate the pump in absence of water, the pump must be submerged in water before activating.

T. We are not responsible for the use of accessories such as aeration diffuser devices or other that could cause water condensation or overflowing on the appliance and cause damage.

U. Never use chemical or toxic substance for cleaning the appliance.

V. The appliance is intended for indoor household use only.

W. The external cable or cord of the luminaires or the pump cannot be replaced if the cord is damaged, in this case, the luminaire or the pump shall be destroyed or sent to an authorized service facility.

X. This appliance has polarized plug (one blade is wider than the other). As a safety feature, this plug will fit in a polarized outlet only one way. If the plug does not fit fully in the outlet, reverse the plug. If it still does not fit, contact a qualified electrician. Never use with an extension cord unless plug can be fully inserted. Do not attempt to defeat this safety feature. (For CANADA / USA market only)

Y. 1.35m is the distance at which the threshold illuminance Ethr condition occurs.

Z. For details of installation, please refer to page 2 and 3, "Installation steps description" section and "Water filling at start-up" section. For details concerning the LED bulbs, please refer to page 5, "LED bulbs" section.

SAVE THESE INSTRUCTIONS

Preparing Brio35

1) Carefully remove all of the components from the packaging and ensure nothing is missing or damaged with reference to the components list.

2) Clean thoroughly the aquarium inside and out with a damp cloth using only fresh water. Never use soap or detergents on any components as it can be harmful to the inhabitants.

3) The Brio35 can weigh in excess of 54kg (120lbs) once filled with water, plants and decorations. Select a proper location that is solid, stable and clean. The surface must be level and cannot be damaged by water, should be away from any electrical equipment, heat source, air draft and high traffic areas. The aquarium must not be in direct sunlight. We suggest the Brio35 Cabinet as a great addition to provide a better experience.

Installation steps description

A) Place the light fixtures on the intended resting surface for the Brio35 (ex: cabinet or furniture) while holding the light fixtures vertically and upright (**picture 1**). Place the base OVER the bottom plate of the light fixtures and interlock together (**pictures 2-3**), at this point the base should be

perfectly level with the resting surface and the light fixtures should hold by itself temporarily.

B) Install the intake elbow on the pump front opening and align the pipe vertically towards the bottom (**pictures 4-5**).

C) Place the pump inside the base by aligning the 4 depressions inside the base with the 4 rubber feet on the pump. Then position its cord through the knockout located on the rear panel of the base while pulling the cord towards the same side as the electrical cord of the light fixtures (**picture 6**).

D) Place the aquarium on top of the base while aligning and engaging the 2 half-round tabs of the center plate of the aquarium with the 2 half-round receptacles on the base (**pictures 7-8**).

E) Insert the outlet tube by aligning the 2 round protrusions below the black rubber O-ring inside the aquarium receptacle (**picture 9**), the bottom tab should be towards the aquarium (**picture 10**). Once inserted completely, turn clockwise to lock it in place (**picture 11**).

F) Install the aquarium basket inside the aquarium (**picture 12**). **IMPORTANT** : it must be flush at all times on both rear and side glass panels of the aquarium. On the side of the outlet tube (**picture 13**). The substrate can be added in the aquarium basket prior to its installation. (See "Aquarium substrate" section)

G) Insert the column into the aquarium corner by aligning the 2 long grooves with the 2 glass panels (**picture 14**). Orient the flexible tube vertically outside the back panel of the aquarium and connect the tube to the pump (**picture 15**).

H) Filter and filter support assembly (**picture 16**). Fold the small portion "A" of the filter to-

wards its longer portion "B" (**picture 17**), then insert the folded portion of the filter towards the center and completely at the bottom of the small cavity "C" of the filter support (**picture 18**).

I) Place the filter support inside the base by aligning the 2 round posts of the base with the 2 round receptacles under the filter support as shown in **picture 19**.

J) Install the garden bed on the base; make sure the front and the rear sliding rails under the garden bed engages properly on the rails of the base, so the garden bed can slide under the column (**picture 20**).

K) Install the siphon cover over the cylindrical post inside the siphon compartment (**picture 21**).

L) Place the black foam pre-filter completely inside the filter cavity (**picture 22**). The pre-filter should not exceed the rim of its compartment. Gently slide the garden bed under the column until it touches the aquarium (**picture 23**).

M) Place the inlet grille inside the column opening (**picture 24**). Press at the bottom of the grille to make sure it is well installed (**picture 25**). **WARNING** : it is critical to have always the inlet grille installed to the column opening to prevent inhabitants to go inside the column compartment. We have supplied 2 inlet grilles so you can insert immediately a clean inlet grille when removing the one in use.

N) Place top basket over the top of the column cavity (**picture 26**).

O) Place the aquarium grille on the top of the aquarium (**picture 27**).

P) Place the central cover in the center of the aquarium grille (**picture 28**).

Q) Install the bamboo support

on the base (**picture 29**), then slide it gently under the column while placing the electrical cord below the bamboo support (**picture 30**).

R) Rinse thoroughly all of the expanded clay media till water is clear, then pour all of the expanded clay substrate into the garden bed (**picture 31**).

S) **WARNING**: DO NOT attempt to lift or move this appliance once assembled even if it is empty, take it apart to reinstall in another location.

Aquarium substrate

A) If you are planting live aquatic plants in the aquarium, we suggest using a premium quality aquatic soil for freshwater aquariums and fill the aquarium basket with this substrate. Make sure the basket is always touching both rear and side glass panels of the aquarium once installed at the bottom of the aquarium (**picture 13**).

B) We suggest adding 1 to 2 cm of fine natural gravel (pH neutral) at the bottom of the aquarium between the basket and the aquarium (**picture 32**). Accumulated waste will deposit there and will be easy to remove with the Brio35 aquarium vacuum cleaner that you can purchase separately.

C) Rinse all of the ornaments that are sold separately to remove any debris before adding to the Brio35.

D) Fill the aquarium half the height with water (see important water conditions below) to decorate with plants, rocks and ornaments before filling completely.



Water filling

Brio35 is a very different system compared to conventional aquariums. It is designed to provide a constant water level inside the aquarium even if there is a loss of water due to evaporation. The maximum water reserve can last from 5 to 10 days depending on the environmental conditions. Regular water refills should always be done directly into the base in order to view the maximum water level indicator. NEVER refill directly in the aquarium.

Important water conditions

The fresh water used requires to be at the recommended pH level for the inhabitants and for the garden plants (between 6.5 and 7 pH). The water must be free of heavy metals and treated for chlorine with products like the Brio conditioner (sold separately). The temperature should be appropriate for the inhabitants. For best results, add Brio Nitrifying Bacteria (sold separately) at each water refill to ensure a stable ecosystem.

Water filling at start-up

- A)** Fill slowly the aquarium until water flows from the bottom of the column and also fill up the filter support inside the base.
- B)** Fill the garden bed until the water can be observed from the siphon compartment.
- C)** Fill the base until indicated "max" (pictures 33-34). Once filled, close gently the garden bed towards the aquarium and plug the pump to the power supply to circulate the water through the system.
- D)** Add Brio Nitrifying Bacteria (sold

separately) in the aquarium (follow direction on the bottle). These good bacteria are responsible to break down the ammonia (fish wastes) and convert the waste into a natural fertilizer for the planted garden.

- E)** Garden plants can now be added to the garden bed. **IMPORTANT:** Read below instructions for garden plants selection and how transplanting in them in the Brio garden bed.
- F)** Once the plants added, let Brio35 run to circulate water continuously for a minimum of 3 days before adding any Inhabitants. Make sure the nitrifying bacteria was added.

G) Adding Inhabitants is the last step. To know how to acclimate them with their new environment, see sections "Friendly species" and "Acclimatizing the inhabitants".

Regular water refill

Slide GENTLY the garden bed away from the column, then pour slowly water into the base till the level reaches the maximum as indicated at the top of the round post indicated "max" (picture 34).

Low water level in the reserve can be noticed when the water flowing at the top of the column is decreasing in output or by sliding the garden bed to view the water level inside the base.

After refilling, if water is not flowing normally at the top of the column, unplug the pump and re-plug it until the water flow recovers normally.

WARNING: NEVER leave the pump operating without any water flow at the top of the column. Verify your water reserve daily.

Selecting garden plants

There are many types of plants suitable for the Brio system. For optimal result, select plant species with a

strong root system and does go well in a semi shaded areas, also, select a plants that are suitable size for the Brio35 and does not over grow the light fixtures. Herbs such as basil, mint, rosemary, chives and parsley, also salads, spider plants, Schefflera and orchids to name a few will do well in the Brio system. Please see your local botanist for care and selection.

Transplanting into the garden

It is important to understand the Brio aquaponics system is "earth less". DO NOT add any earth or soil in the garden bed. The Brio35 comes specifically with expanded clay beads so the plant roots grows through them while providing good water circulation and porous surface for bacteria to settle into. For best results, use seedling or small plants to prevent plant loss.

Before transplanting your plants in the Brio system, ALWAYS unplug the pump from the power supply.

- A)** Gently remove the pot from the plant (picture 36).
- B)** Use a bucket of water at room temperature. Place only the portion of the roots with soil under the water and gently agitate to remove completely all of the soil without damaging the roots (pictures 37-38), rinse to remove any debris.
- C)** Immediately transplant in the expanded clay beads. Make sure the roots are all under the clay at least to the middle depth of the garden bed (picture 39).
- D)** Plug the pump to the power supply to let circulate the water through the system.

Hint: The garden bed can be removed away from the appliance to facilitate the transplantation: Always unplug the

pump from the appliance before doing so. DO NOT let the water circulate when the garden bed is removed.

Bamboo Garden

Located behind the aquarium, there are 3 openings where bamboo stems can be inserted to create a beautiful and natural looking background to the Brio35 aquarium.

- A)** Select bamboo stems from a total height of 30cm up to 60cm
- B)** Insert a bamboo stem in each opening of the bamboo support (picture 35).

Friendly species

The laws of each country determines the amount and type of the aquatic species in relation to the volume of water in the aquarium. Refer to your vendor of aquatic species to learn more about your laws and regulations.

Acclimatizing the inhabitants

After the Brio35 has been running for a minimum of 3 days, the Brio nitrifying bacteria (sold separately) were added and the water temperature and chemistry are optimal for the new inhabitants, place the inhabitants in their bag gently on top of the water inside the aquarium for about 1/2 hour to 1 hour to allow then to acclimate to the water temperature. Open the bag inside the water gradually until the inhabitants comes out from the bag. This method reduces the stress on the inhabitant.

Avoid feeding for 48 hours. After, it is important not to over feed your inhabitants. The general rule is to feed them only what you see them consume within a couple of minutes.

Maintenance

ALWAYS disconnect appliance and its accessories from their electrical source before the maintenance.

DO NOT use any equipment that was in contact with soap, detergents or chemical products.

Cleaning the inlet grille
(Recommended inspection regularly).

The inlet grille is located on the side of the column above the water line. It must be clean at all times and not be obstructed with debris. Brio35 includes 2 inlet grilles so you can insert immediately a clean one when removing the one in use.

WARNING: Never leave the opening of the column without any inlet grille, as inhabitants could go inside the column area. If this happens, turn off the pump immediately and remove the column to retrieve the inhabitants. Failure to do so may result in the inhabitants, loss of life.

Trimming garden plants
(Recommended inspection regularly)

Some garden plants such as herbs, requires regular trimming to keep them healthy and to prevent overgrowth. We recommend trimming plants 10 cm below the light fixtures.

Removing roots inside the siphon compartment
(Recommended inspection regularly)

Brio35 come with a special tool to remove the roots (**picture 42**). To access the siphon compartment, slide out the garden bed, then remove the siphon cover and inspect if there are any roots growing in the compartment.

This inspection should be done every time you refill the unit. Use the hook tool to pull out all of the roots from the bottom of the compartment (**picture 43**). This should also be done in the garden section all around the compartment of the pre-filter and the siphon by pushing the hook through the clay bead media while reaching the bottom and pulling the roots upwards (**see the green dotted line on picture 43**).

NOTE: If roots are present in your siphon area, they will restrict water flow and the siphon will not work optimally, so this can result in unsuitable conditions for some garden plants.

Cleaning the pre-filter
(Recommended at every water refill)

Slide out the garden bed, pull it out and rinse thoroughly with water until it is clean, reinstall and make sure it does not protrude the rim of its compartment.

Changing filter
(Recommended every 3-4 weeks)
To access the filter, slide out the garden bed and pull out the siphon cover to prevent water from coming out from the pipe and remove the garden bed completely from the appliance.

Pull out the filter support (**picture 19**) and pour out gently half of the water through the filter into the base. Bring to a sink to clean and to replace the filter. Insert the replacement filter (sold separately) completely inside the support filter compartment by folding the smallest part inwardly (**pictures 17-18**), then fill it with water and replace it in the base.

Only use Brio35 replacement filters.

Cleaning the bottom substrate of the aquarium
(recommended every 2-3 weeks).

Brio35 was specially designed to recycle the inhabitant wastes and overfeeding that remains at the bottom of the aquarium. The waste is a natural fertilizer for the planted garden. Brio35 self-priming substrate vacuum cleaner (sold separately) enables to clean the bottom of the aquarium and includes a special adaptor to evacuate the waste directly in the pre-filter area of the garden bed, bringing all of the nutrients to the plants.



Cleaning the siphon cover
(Recommended monthly)

The siphon cover has a small hole on the top surface. This hole enables the proper function of the siphon, it is important to make sure this hole is not blocked by debris. Clean the hole with a small brush like a toothbrush and NEVER use sharp tool that can damage the hole.

Cleaning the outlet pipe
(Recommended every 6 months)

Disconnect the flexible tube from the pump : remove the column then the outlet pipe. Gently remove the O-ring without using any sharp tool, then slide gently the 2 halves to separate and access the inside. Clean and reinstall (**picture 44**).

Hint: When the column is removed, clean it as well as the surfaces of the aquarium it covered. If you have a heater installed there, wait before it is cool, then clean it as well. Reinstall the column gently and make sure no inhabitant gets trapped between the inside of the column and the aquarium.

Cleaning the pump
(Recommended every 6 months or if there is an abnormal decrease of water output on top of the column)
Unplug from the power supply, remove the pump from the appliance, then remove the elbow pipe and clean the pipe and its receptacle area on the pump. Remove impeller assembly for complete cleaning of internal component (**pictures 45-46-47**). **WARNING;** handle with extra care as these parts are fragile.

Cleaning the algae build up inside the aquarium
(Recommended regularly)
To maintain a clean looking and healthy system, this should be done regularly to prevent overgrowth. An algae cleaning magnet can be used to clean the aquarium glass. Use a toothbrush to remove algae build up in the aquarium basket as well as on the column; DO NOT use any abrasive products that could damage the polished surface of the product when cleaning.

Water change in the aquarium
(Recommended if there is no or little plants growing in the garden and if you have inhabitants in the aquarium)
With a healthy, growing garden, water changes are practically not required. If there is no plants or just a few very small seedling starting, check your level of ammonia and nitrite and nitrates regularly. If they are above normal level, make a 25% water change. Also, add Brio Nitrifying Bacteria.

IMPORTANT: Always unplug the pump and the heater (sold separately) from the power supply before removing water from the aquarium.

Light dual timer instructions

The Brio35 is equipped with a

dual light timer to control individually each light fixtures to provide optimal light exposure for each aquatic and garden space. The dual timer is already preset to provide 15 hours (7:00 until 22:00) light exposure on the garden and 4 hours (18:00 until 22:00) on the aquarium per day. Before use, pull out gently the tab from the timer module.

(picture 40)

Set time and timer settings (picture 41)

1) Press the button "CLOCK" (Both red light with "M" and green light with "A" on the control panel will flash)

2) Press + or – to select your time of day.

3) Press "SET" to confirm the time of day.

Set the ON /OFF time for each light:

4) Press + or - to select the "ON" time for the light fixture that is illuminated.

5) Press "SET" to confirm time.

6) Press + or - to select the "OFF" time for that same light fixture that is illuminated.

7) Press "SET" to confirm time.

8) Repeat step 4 to 7 for the other light fixture.

The green light with "A" for Automatic mode on the control panel will now be illuminated. Your time of day and presets are configured, the lights will now automatically ON/OFF to the presets.

ON/Off (by pass):

The unique dual timer of Brio35 allows you to "On" or "Off" the lights at any time by bypassing the preset times.

1) Press ON/OFF on the control panel: Both light fixtures will be "ON"

(the red light will flash with "M" for manual mode)

2) Press again ON/OFF: Only one light will be "ON"

3) Press again ON/OFF: Only the second light will be "ON"

4) Press again ON/OFF: All lights are "OFF"

5) Press again ON/OFF: To go back to the automatic mode

HINT: If you do not switch from "M" mode (manual) to "A" mode (automatic), it will switch by itself once reaching 00:00

Light bulbs

1) DO NOT look directly at the light source from the LED bulbs.

2) The light bulb is in excess of the Exempt group and that the viewer related risk is dependent upon how the users install and use the product.

3) Exposure hazard values are (5.15) and the hazard distance are (1350mm) with optional graphical presentation of distant-dependent EHV.

4) Avoid possible exposure to hazardous optical radiation with proper installation, maintenance, and safe use.

5)

RISK GROUP 2

WARNING: Blue light is emitted from this product. Do not stare at operating lamps. May be harmful to eyes.

This product emits blue light of risk group 2 which is EN62471, Photobiological Safety of Lamps and Lamp Systems. It is harmful to human eyes. Do not stare at the operating lamp.

6) Brio light bulbs are specially designed for the Brio35 to provide the proper spectrum. ONLY those

light bulbs can be installed on this product. Other light bulbs could overheat and damage the product. We are not responsible for any damages using other light bulbs.

7) The rating current: 60mA

8) The non-dimmable symbol:



Light bulb installation

Brio35 comes with a suction cup to facilitate removal and installation of the light bulbs.

A) Unplug the light fixtures from the power supply before removing the bulb, wait until the bulb is cool.

B) Make sure the aquarium grille and the center cover are installed over the aquarium to prevent dropping the bulb into the water.

C) Place the suction cup on the lens of the light bulb (picture 48).

D) To install: Insert the 2 pins of the light bulb into the socket inside the fixture with the help of the suction cup. Turn clockwise until the bulb inserts deeper inside the fixture, then continue to turn clockwise firmly until it locks in place (picture 49).

E) Remove the suction cup from the bulb by peeling the edge gently, DO NOT pull on the suction to remove (picture 50).

Heater installation

(Sold separately)

We recommend using the Brio35 heater; it can be placed inside the aquarium column, hidden completely from view to provide clean visual aesthetic and to avoid any hot spot that can cause injuries to inhabitants and plants.

A) Unplug the pump from the power source.

B) Remove the column from the aquarium, but first unplug the flexible tube from the pump.

C) Gently place the heater in the lower corner of the aquarium lower corner (where the column was positioned) by pushing the suction cups of the heater on the rear glass panel and by placing the heater at 1 cm beside the glass panel of the aquarium. Make sure the heater is placed as low as possible. Place the electrical cord over the top rear panel of the aquarium (picture 51).

D) Reinstall the column and bring the electrical cord of the heater through the knock out located in the base and by following the other power cords.

IMPORTANT: Make sure water is up to the maximum level in the aquarium before plugging the heater to a power supply. A drip loop must be arranged with the electrical cord before plugging into a power supply (figure 1).

Other types of heaters, can be installed on the glass panels of the aquarium, but not inside the aquarium column as we are not responsible for any damages that could occur.

Troubleshooting

PROBLEM:

Loss of water flow on top of the column

SOLUTIONS:

A) Check your water reserve inside the base. If it is low, add water up to the indicated level "max", if the water flow does not increase to normal, unplug and plug the pump until the water flows normally.

B) Check if the pump elbow intake component is blocked at the bottom opening, if not, remove the elbow from the pump and remove any debris in the pump opening.

C) Remove the pump for a complete cleaning, see "Cleaning the pump" in the "Maintenance" section.

PROBLEM:

Algae grows inside the aquarium

SOLUTIONS:

A) Reduce the light exposition on the aquarium side to a maximum of 1 to 2h per day.

B) Orient the aquarium light fixtures towards the garden and not directly in the aquarium.

C) Check your ammonia level, if they are above the normal, make a 25% water change, but first, read the "Water change aquarium" from the "Maintenance" section.

D) Do not install the aquarium in front of a window.

PROBLEM:

Roots are growing in the siphon compartment.

SOLUTION:

Use the hook tool to pull out all of the roots from the bottom of the compartment. This should also be done in the garden section all around the compartment of the pre-filter and the siphon by pushing the hook through the clay bead media while reaching the bottom and pulling the roots upwards. **(See the green dotted line on picture 43).**

Roots restricts water flow and prevents the siphon from working properly. This can cause an unsuitable condition for some garden plants.

PROBLEM:

Plant leaves are getting yellow color.

SOLUTIONS:

A) If there are not many inhabitants in the aquarium, it is possible that your plants are missing nutrients. Add Brio Plant Fertilizer to provide the necessary nutrients to the garden plants.

B) Check inside the siphon compartment if roots are present. If so, remove them as they will restrict water flow and the siphon to not work optimally. This can cause an unsuitable condition for some garden plants.

See with your local botanist if the selected garden plants are suitable for aquaponics culture.

Aquaponics or Hydroponics?

Brio35 is designed to be used for these 2 different disciplines.

AQUAPONICS:

Is the combination of aquatic inhabitants and garden plants living in the same circulating water. The waste created from the aquatic inhabitants is broken down by bacteria to become a natural fertilizer for the garden plants, while the plants contribute in cleaning the water.

You can also use the Brio35 as a Hydroponics system!

HYDROPONICS:

The culture of garden plants living with the roots in water and fed with fertilizers without any fish or aquatic inhabitants. By adding products like the Brio Plant fertilizer, you can grow only plants into your Brio35 system.

Brio35 limited guaranty

BRIO35 is guaranteed for 24 months from the date of purchase; that is why it is important to keep the proof of purchase if you should make a claim.

The guarantee covers defects in materials and workmanship and excludes all breakage caused by improper assembly, operation, use or improper maintenance. To qualify for the guarantee, the user must follow and comply with all the installation steps and all recommendations and maintenance listed in the user's manual.

Wear parts such as the light bulbs, clay substrate and all filters, are not guaranteed. The guarantee does not cover consequential loss or damage to animate or inanimate objects. When a claim guarantee is made, we'll decide if we repair or replace the product, depending on the problem. If we determine the unit has been tampered with (attempted repair non-recommended replacement parts, cracks or breakage), the unit will not be guaranteed. This guarantee does not apply if the product has a breakage or a mechanical damage (for instance: broken glass, pump or damage parts...). This guarantee does not exclude your statutory rights. For any questions or claim regarding Brio products, please contact us at:

info@brioaquaponics.com

Brio35 accessories (Sold separately)

Brio35 Replacement filters (6 pack)

Replacement filters provides crystal clear water and are designed for easy replacement. Replace filter every month for best results.

Brio35 Substrate vacuum cleaner

The Brio 35 self-priming aquarium vacuum enables to clean the bottom of the aquarium and includes a special adaptor to evacuate the wastes in the pre-filter of the garden bed, bringing all of the nutrients to the plants. A must have accessory to facilitate cleaning!

Brio35 LED light bulbs

Brio LED light bulbs comes in 3 different spectra for different purposes:

The 6300k day light used for the aquarium, can also be added to the garden for midday realistic foliage viewing.

The Foliage spectrum, maximizing growth of green foliage plants.

The Flower spectrum, in combination with the foliage spectrum bulb works best for flowers.

Brio35 Cabinet

Not only is the Brio35 cabinet is elegant and stylish. It is ideal for storage of all the accessories. It is a practical and convenient addition to the Brio35.

Brio35 Digital heater (CE)

Equipped with a digital controller to set and view the operating temperature. The heater can be placed inside the aquarium column area hidden completely from view to provide clean visual aesthetic for the Brio35, while avoiding any hot spot for the inhabitants and plants.

Brio is a registered trademark of:
robindesigns



This product bears the selective sorting symbol for waste electrical and electronic equipment (WEEE). This means that this product must be handled pursuant to European Directive 2002/96/EC in order to be recycled or dismantled to minimize its impact on the environment. Check with your local Environmental Agency for possible disposal instructions or take to an official council registered refuse collection point. Electronic products not included in the selective sorting process are potentially dangerous for the environment and human health due to the presence of hazardous substances.

Version:12/14